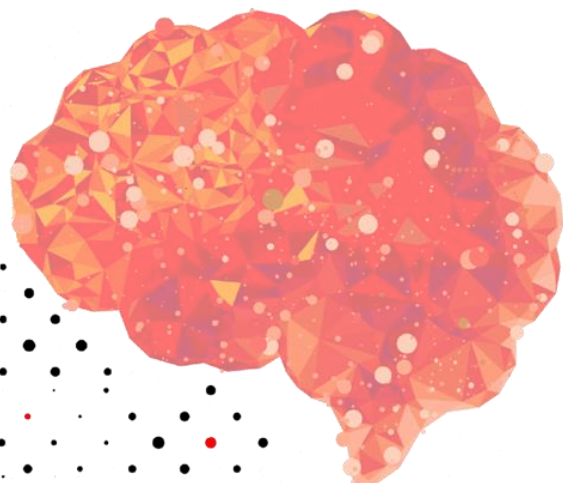


SION STROKE RECOVERY CONFERENCE



11-12th
December



<https://ssrc2023.epfl.ch/home/>

Sion, Valais (CH)



EPFL

SSRC2023

Venue and directions

Conference venue: **Campus Energypolis**



Aula Conference Room

Rue de l'Industrie 23 (north entrance)

Opening and closing, oral sessions and symposia



Restaurant La Ruche

Rue de l'Industrie 21

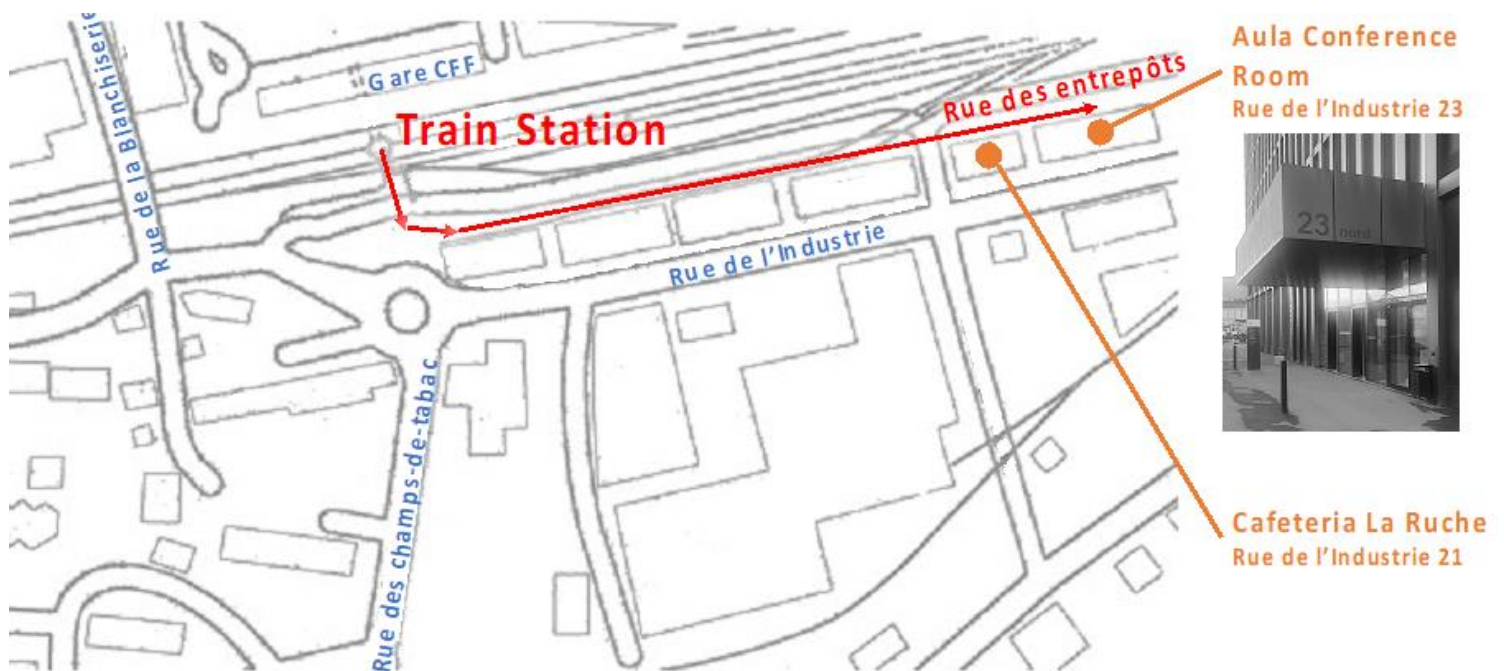
Welcoming and registration, coffee breaks, lunches, poster session & cocktail (mezzanine)

Venue and directions

Directions



- **Sion train station <-> Conference Venue: 500-meters walking**



- At the train station, head towards the EPFL/Campus Energypolis/Quartier sud exit (opposite to the city center exit).
- Once outside, take the left onto the narrow “Rue des entrepôts” before the buildings and roundabout – Follow the signs indicating the direction of “Campus Energypolis” direction.
- For welcoming and registration on Monday morning, continue until Rue de l'Industrie 21 (north entrance on Rue des entrepôts) to reach the Cafeteria La Ruche (mezzanine). Coffee breaks, lunches, poster session and cocktail, will also take place there.
- Then, continue until the Aula Conference Room (Rue de l'Industrie 23), where the opening and closing ceremonies, as well as all oral sessions and symposia will be held. The north entrance of the building is on the street “Rue des entrepôts”, cf. image.
- Please note that signs and staff members staff will be around to help you finding your way in case you need.



Contacts



Friedhelm Hummel - Director

Defitech Chair for Clinical Neuroengineering
EPFL – Neuro-X Institute – SV
CRR P1 64 (Clinique Romande de Réadaptation)
Av. du Grand-Champsec 90, CP 352
CH-1951 Sion
Tel: +41 27 603 23 59
E-mail: friedhelm.hummel@epfl.ch



Lisa Fleury – Scientist & Conference Secretary

Defitech Chair for Clinical Neuroengineering
EPFL – Neuro-X Institute – SV
CRR P1 64 (Clinique Romande de Réadaptation)
Av. du Grand-Champsec 90, CP 352
CH-1951 Sion
Tel: +41 21 693 97 60
Tel (mobile): +41 77 810 20 18
E-mail: lisa.fleury@epfl.ch



Caroline Magnin - Administrative assistant

Defitech Chair for Clinical Neuroengineering
EPFL – Neuro-X Institute – SV
CRR P1 64 (Clinique Romande de Réadaptation)
Av. du Grand-Champsec 90, CP 352
CH-1951 Sion
Tel: +41 21 693 86 61
E-mail: caroline.magnin@epfl.ch

For more information

<https://ssrc2023.epfl.ch>